



# TowNation

Beyond Roads, Across Oceans

Qingdao TowNation Trailer Parts CO Ltd

NO. 182-6 HAIER ROAD, QINGDAO, CHINA

TEL: 86-53286077816

FAX:0086-532-80662976



# TowNation

Beyond Roads, Across Oceans



TRAILER  
SUPPLY

# INTRODUCTION

Qingdao TowNation is a professional supplier of quality tire, wheels and parts in trailer industry. With manufacturing base in China since 2005, TowNation is committed to partnering with customers by delivering safe, cost-effective, reliable products. TowNation mainly offer Trailer Tire, Wheel Rim, Coupler, Jacks and relative trailer parts for recreational vehicle (RV), cargo, utility, marine, horse/livestock, and heavy-duty equipment. At TowNation, you could find most trailer reference products with quick delivery. Our Vision: to be the leading and most trusted supplier of tires and services in all of our geographic markets.

Products focus on Quality, Consistency and Choice.

Warranty gives you and your customers' peace of mind

Service concentrated on customers' satisfaction

## ***TowNation Vision***

To be the leading and most trusted supplier of tires and services in all of our geographic markets.

PRODUCTS FOCUS ON QUALITY, CONSISTENCY AND CHOICE, WARRANTY GIVES YOU AND YOUR CUSTOMERS' PEACE OF MIND SERVICE CONCENTRATED ON CUSTOMERS' SATISFACTION

# CONTENTS

TIRE	01
STEEL WHEEL	05
ALLOY WHEEL	06
ATV TIRE	07
COUPLER	10
TRAILER JACKS	11
DOOR LOCK	16
CARGO HARDWARE	17
HANGER KITS	19
VALVE	31
HANDWICH	32
PANEL	33

# ALL STEEL TRAILER TIRE



SIZE	PR	Pattern No.	STANDA RD RIM	Pressure(kPa)		Max Load(kg)		Load Index		Speed Rate	Diameter				Tread Depth	
				Single	Dual	Single	Dual	Single	Dual		mm		inch		mm	1/32in
											Overall Diameter	Section Width	Overall Diameter	Section Width		
ST225/75R15	14	Trail Blazer	6J	655	655	1450	1285	121	117	M	719	223	28	9	9.0	11
ST235/80R16	14	Trail Blazer	6 1/2J	760	760	1850	1650	129	125	N	782	235	31	9	7.5	9
ST235/85R16	14	Trail Blazer	6 1/2J	760	760	2000	1750	132	127	L	806	235	32	9	9.0	11



# TRAILER TIRE

Size	LR/PR	Service	Standard	Section Width		Overall Diameter		Max. Load		Max. Air	
		Index	Rim	mm	inch	mm	inch	kg	lbs	kpa	psi
ST175/80R13	C/6PR	91/87L	5.0J	177	6.97	610	24.02	615/545	1360/1200	350	50
ST185/80R13	D/8PR	99/95L	5.0J	184	7.24	626	24.65	775/690	1710/1520	450	65
ST205/75R14	C/6PR	100/96L	5.5J	203	7.99	664	26.14	800/710	1760/1570	350	50
ST215/75R14	C/6PR	102/98L	6.0J	216	8.5	678	26.69	850/750	1870/1650	350	50
ST215/75R14	D/8PR	108/103L	6.0J	216	8.5	678	26.69	1000/875	2200/1930	450	65
ST205/75R15	C/6PR	101/97L	5.5J	203	7.99	689	27.13	825/730	1820/1610	350	50
ST205/75R15	D/8PR	107/102L	5.5J	203	7.99	689	27.13	975/850	2150/1870	450	65
ST225/75R15	C/6PR	107/102L	6.0J	223	8.78	719	28.31	975/850	2150/1870	350	50
ST225/75R15	D/8PR	113/108L	6.0J	223	8.78	719	28.31	1150/1000	2540/2200	450	65
ST225/75R15	E/10PR	117/112L	6.0J	223	8.78	719	28.31	1285/1120	2830/2470	550	80
ST235/80R16	E/10PR	124/120L	6.5J	235	9.25	782	30.79	1600/1400	3520/3080	550	80
ST235/85R16	F/12PR	128/124L	6.5J	235	9.25	806	31.73	1800/1600	3960/3520	660	95
ST225/90R16	D/8PR	121/117L	6.0J	220	8.66	808	31.81	1450/1285	3200/2830	450	65

# TRAILER WHEEL



Diameter	Width	Bolt Pattern	Center Bore	Offset
14"	5.5"	5 on 4.5"	3.19"	0
15"	5"	5 on 4.5"	3.19"	0
15"	6"	6 on 5.5"	3.75"	0
16"	6"	6 on 5.5"	3.75"	0
16"	6"	8 on 6.5"	4.90"	0
16"	7"	8 on 6.5"	4.90"	0

## DUAL WHEEL

Diameter	Width	Bolt Pattern	Center Bore (mm)	Offset	Vent Hole
16"	6"	8 on 6.5"	121	139.7	Dual
16"	6"	8 on 6.5"	124	139.7	Dual

# TRAILER WHEEL



CLASSIC 501



CLASSIC 601



CLASSIC 801



CW617



CW617



CW618



CW618



CW515



CW515



CW516



CW516

Diameter	Width	Bolt Pattern	Center Bore	Offset	Capacity
14"	5.5"	5 on 4.5"	3.19"	0	2200lbs
15"	5"	5 on 4.5"	3.19"	0	2150lbs
15"	6"	6 on 5.5"	3.75"	0	2860lbs
16"	6"	6 on 5.5"	3.75"	0	3520lbs
16"	6"	8 on 6.5"	4.90"	0	3860lbs
16"	7"	8 on 6.5"	4.90"	0	4400lbs



# ATV TIRE

SIZE	PR	RIM	Load Capacity(kg)		Inflated Pressure(Kpa)		QTY/40HQ	WEIGHT	OD	SW
			LBS	KG	PSI	KPA		KG	MM	MM
AT25X8-12 TL	6	6.5AT	340	155	7	45	850	8.8	635	198
AT25X10-12 TL	6	8.0AT	420	190	7	45	690	11.5	635	246
AT26X9-12 TL	6	7.0AT	410	185	7	45	680	10.9	660	229
AT26X11-12 TL	6	9.0AT	480	218	7	45	620	12.3	660	254



# MOBILE HOME TIRE

SIZE	WHEEL DIAMETER (INCHES)	LOAD IN KG	LOAD RANGE LOAD INDEX	PLY RATING	OVERALL DIAMETER	SECTION WIDTH	MAX PSI LBS RATED
8-14.5	16	1380	E	14	706	203	90

# ASSEMBLING



# STAMPED TRAILER COUPLERS

- Stamped couplers are 100% ball fitted to ensure a proper fit when coupler is hooked up to a hitch ball
- Black finish stamped couplers come standard with a durable black powder coat finish
- Coupler latch designs are setup for easy, yet safe coupling and uncoupling
- Include all SAE required markings and are compliant to standard J684

## STRAIGHT COUPLERS

Product Code	Ball Size	Channel Width	Capacity (lbs)	Finish	Unit Wt. (lbs)
TN-2001-O	1-7/8"	2"	2,000	Raw with light oil	2.93
TN-2001-Z	1-7/8"	2"	2,000	Durable zinc finish	2.9
TN-2002-Z	1-7/8"	2-1/2"	2,000	Durable zinc finish	3.2
TN-2003-Z	1-7/8"	3"	2,000	Durable zinc finish	3.22
TN-3001-O	2"	2"	3,500	Raw with light oil	4.4
TN-3001-Z	2"	2"	3,500	Durable zinc finish	4.4
TN-3002-O	2"	2-1/2"	3,500	Raw with light oil	4.51
TN-3002-Z	2"	2-1/2"	3,500	Durable zinc finish	4.4
TN-3003-O	2"	3"	3,500	Raw with light oil	4.5
TN-3003-Z	2"	3"	3,500	Durable zinc finish	4.4
TN-5003-O	2"	3"	5,000	Raw with light oil	4.69
TN-5003-Z	2"	3"	5,000	Durable zinc finish	4.69
TN-8003-Z	2"	3"	8,000	Durable zinc finish	6.65



TN-5400-B



TN-5100-B



TN-5200-B



TN-5003-Z

## TOP LATCH A-FRAME COUPLERS

Product Code	Ball Size	Capacity (lbs)	Finish	Unit Wt. (lbs)
TN-5100-O	2"	5,000	Raw with light oil	6.73
TN-5100-B	2"	5,000	Black powder coat	6.76
TN-5400-O	2-5/16"	14,000	Raw with light oil	8.8
TN-5400-B	2-5/16"	14,000	Black powder coat	8.89
TN-5100-Z	2"	5,000	Durable zinc finish	6.73
TN-5400-Z	2-5/16"	14,000	Durable zinc finish	8.8

## EXT. YOKE/HELMET A-FRAME COUPLERS

Product Code	Ball Size	Capacity (lbs)	Finish	Unit Wt. (lbs)
TN-5210-O	2"	8,000	Raw with light oil	7.67
TN-5210-B	2"	8,000	Black powder coat	7.69



**TRAILER PARTS  
AND ACCESSORIES**

# MARINE SWIVEL JACKS

Ideal for use with boat, sport craft, snowmobile and other recreational trailers.



TN-1200B



TNSQ-2500B



TN-1206B



TN-1500B-DWL



TN-1500B

- Swivel jacks are available in 1,000lb, 1,200lb and 1,500lb capacities and all include a large 1/2" pull pin to activate the swivel mechanism
- Large comfort handle included on all models
- 1,200lb and 1,500lb models include a four bolt pin through design on mounting plate for superior side load support
- 1,000lb models include a bolt through design for side load support
- Durable clear zinc finish
- All bolt on models come with all mounting hardware and fits up to a 3"x5" trailer frame
- All weld on models come with weldable bracket
- RHSQ-2500B drop leg adds 13.75" of adjustability

Product Code	Support and Lift Capacity	Travel Distance	Bracket Height	Jack Height (fully retracted)	Bracket Type	Caster Size	Unit Weight (lbs)
TN-1206B	1,000	10"	13.5"	24"	Bolt on	6"	14.8
TN-1206BBX (Retail Boxed)	1,000	10"	13.5"	24"	Bolt on	6"	15.8
TN-1200B	1,200	10"	13.5"	24"	Bolt on	6"	15.1
TN-1200BBX (Retail Boxed)	1,200	10"	13.5"	24"	Bolt on	6"	16.1
TN-1500B	1,500	10"	13.5"	26"	Bolt on	8"	18.43
TN-1500B-DWL	1,500	10"	12.5"	26"	Bolt on	Dual 6"	18.7
TN-1500BBX-DWL (Retail Boxed)	1,500	10"	12.5"	26"	Bolt on	Dual 6"	19.7
TNSQ-2500B	2,500	15"	7.25"	24.75"	Fixed Mount	Foot	22.56

# A-FRAME JACKS

For use with trailers with A-frame couplers.

- Durable exterior grade black powder coat finish or durable clear zinc plated finish
- Topwind models with large black handle use a bolt head fastener. This is to ensure the handle does not pop off during operation of jack
- Handle arm has durable zinc finish for a nice look
- Some topwind models are available with a comfortable claw knob on a clear zinc solid bar handle that can be folded away when not in use
- Sidewind jacks have an interior gear box for a nice sleek look



TN-JS-2000-B



TN-JA-2006-B



TN-JA-5000-B



TN-JA-5000T-B



TN-JA-2001S-B

Product Code	Support Capacity (lbs)	Lift Capacity (lbs)	Handle Style	Travel Distance	Bracket Height	Jack Height (fully retracted)	Description	Unit Weight (lbs)
TN-JA-2000-B	3,000	2,000	Topwind	14"	8.25"	21.25"	Exterior grade black powder coat finish	9.05
TN-JA-2000-Z	3,000	2,000	Topwind	14"	8.25"	21.25"	Durable clear zinc finish	9.05
TN-JA-2001-B	3,000	2,000	Topwind	14"	5"	21.25"	Exterior grade black powder coat finish	9.05
TN-JA-2002-B	3,000	2,000	Topwind	15"	9.25"	24.25"	Exterior grade black powder coat finish	9.96
TN-JA-2006-B	3,000	2,000	Topwind	14"	8.25"	21.25"	Exterior grade black powder coat finish	9.05
TN-JA-5000-B	5,000	3,000	Topwind	14"	10.5"	21.25"	Exterior grade black powder coat finish	9.63
TN-JA-5000T-B	5,000	3,000	Topwind	15"	10"	22.75"	Exterior grade black powder coat finish with solid bar handle and claw grip	10.11
TN-JA-5000T-Z	5,000	3,000	Topwind	15"	10"	22.75"	Durable clear zinc finish with solid bar handle and claw grip	10.11
TN-JA-2001S-B	3,000	2,000	Sidewind	14.5"	9.25"	25"	Exterior grade black powder coat finish	10.29
TN-JA-5000S-B	5,000	3,000	Sidewind	14.5"	9"	25"	Exterior grade black powder coat finish	13.33

# A-FRAME JACK ACCESSORIES



TN-101



TN-99



TN-100



TN-1005H-Z  
5-1/4" Diameter (base of foot)



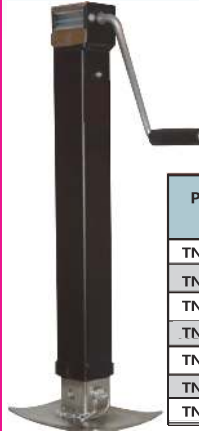
TN-101



TN-SPP-100

Product Code	Product Type	Lift Capacity (lbs)	Description	Unit Weight (lbs)
TN-1005H-Z	Drop Leg	2,000	9-1/2" drop leg with snap pin (5 position adjustable)	2.62
TN-101	Poly Caster Wheel	1,200	Caster assembly with 2"x6" poly wheel, fits 2" jack tube	3.33
TN-102	Steel Caster Wheel	1,200	Caster assembly with 2"x6" steel wheel, fits 2" jack	4.22
TN-100-B	Black Jack Foot	2,000	Jack foot with hardware, fits 2" tube, 1.7" tall, black powder coat finish	1.78
TN-100-Z	Zinc Jack Foot	2,000	Jack foot with hardware, fits 2" tube, 1.7" tall, clear zinc finish	1.78
TN-101	Zinc Jack Foot	2,000	Jack foot with hardware, fits 2" tube, 8.5" tall, clear zinc finish	3.11
TN-99	Zinc Jack Foot	2,000	Jack foot with hardware, fits all a-frame jacks, clear zinc finish	0.67
TN-SP-100	Support Plate	N/A	Bottom support plate with 2.29" hole for 2K and 5K A-frame jacks, raw with light oil finish	0.67

# DIRECT WELD JACKS



TN-7000

Product Code	Support Capacity (lbs)	Lit Capacity (lbs)	Handle style	Travel Distance	Bracket Height	Jack Height (fully retracted)	Description	Unit Weight (lbs)
TN-5000	5,000	3,000	Topwind	15"	N/A	25.25"	Drop Leg	17.96
TN-5000S	5,000	3,000	Sidewind	15"	N/A	24.5"	Drop Leg	19.96
TN-5000S-FL	5,000	3,000	Sidewind	15"	N/A	24"	Fixed Leg without base	16.65
TN-7000	8,000	7,000	Topwind	15"	N/A	25.25"	Drop Leg	21.29
TN-7000S	8,000	7,000	Sidewind	15"	N/A	25.5"	Drop Leg	23.24
TN-8000	8,000	7,000	Topwind	15"	N/A	25.25"	2-1/4" Outer Tube	20.66
TN-8000S	8,000	7,000	Sidewind	15"	N/A	25.5"	2-1/4" Outer Tube	22.51

# DIRECT WELD SPRING RETURN

Product Code	Support Capacity (lbs)	Lit Capacity (lbs)	Handle style	Travel Distance	Jack Height (fully retracted)	Total Adjust	Description	Unit Weight (lbs)
TN-12020SP-F2	12,000	10,000	Sidewind	12.5"	28"	25.5"	Pin to front, handle and mounting hardware	55.07
TN-12020SP-F2NH	12,000	10,000	Sidewind	12.5"	28"	25.5"	Pin to front, handle not included	52.07
TN-12020SP-R2	12,000	10,000	Sidewind	12.5"	28"	25.5"	Pin to front, handle and mounting hardware	55.07
TN-12020SP-R2NH	12,000	10,000	Sidewind	12.5"	28"	25.5"	Pin to side, handle not included	52.07

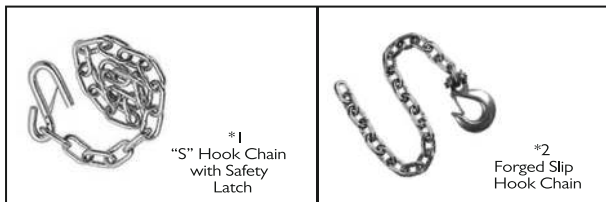


TN-12020SP-F

# FORGED D-RINGS AND SAFETY CHAIN



Product Code	Diameter	Interior Dimensions	Safe Working Load (lbs)	Ultimate Breaking Strength (lbs)	Description	Unit Wt.
TN-120W	1/2"	2-1/2"x2-3/8"	4,080	11,780	Forged from C1045 steel with weld on mounting bracket	.82
TN-12B	1/2"	2-1/2"x2-3/8"	4,080	11,780	Forged from C1045 steel with two hole bolt on mounting bracket	.99
TN-580W	5/8"	3"x3"	6,130	18,390	Forged from C1045 steel with weld on mounting bracket	1.87
TN-340W	3/4"	3"x3"	9,120	26,500	Forged from C1045 steel with weld on mounting bracket	2.41
TN-1034W	1"	3"x4"	15,586	46,760	Forged from C1045 steel with weld on mounting bracket	4.91
RRING-Q6000	3/8"	4.5"x5" (Overall)	2,000	6,000	Bolt-on recessed D-Ring	1.11



Product Code	Cell Dia.	Overall Length	Capacity (lbs)	Cell Grade	Hook Description	Unit Wt. (lbs)
TN31624	3/16"	24"	3,200	30	1 S-Hook with safety latch (*1)	.95
TN31627	3/16"	27"	3,200	30	1 S-Hook with safety latch (*1)	1.1
TN31648	3/16"	48"	3,200	30	2 S-Hooks (1 hook on each end of chain assembly) with safety latches (*1)	1.9
TN1427	1/4"	27"	5,200	30	1 S-Hook with safety latch (*1)	1.7
TN1448	1/4"	48"	5,200	30	2 S-Hooks (1 hook on each end of chain assembly) with safety latches (*1)	3.0
TN1454	1/4"	54"	5,200	30	2 S-Hooks (1 hook on each end of chain assembly) with safety latches (*1)	3.4
TN1460	1/4"	60"	5,200	30	2 S-Hooks (1 hook on each end of chain assembly) with safety latches (*1)	3.7
TN113230	5/16"	30"	7,600	30	1 S-Hook with safety latch (*1)	2.7
TN113254	5/16"	54"	7,600	30	2 S-Hooks (1 hook on each end of chain assembly) with safety latches (*1)	5.0
TN1430-G43	1/4"	30"	7,800	43	1 Forged slip hook with safety latch (*2)	2.1
TN51635-G43	5/16"	35"	11,700	43	1 Forged slip hook with safety latch (*2)	3.6
TN3835-G43	3/8"	35"	16,200	43	1 Forged slip hook with safety latch (*2)	5.8
TN1436-G70	1/4"	36"	12,600	70	1 Forged slip hook with safety latch (*2)	2.5
TN3835-G70	3/8"	35"	26,400	70	1 Forged slip hook with safety latch (*2)	5.2

# RV DOOR LOCK

A BETTER SECURITY FOR YOUR RV TRIP

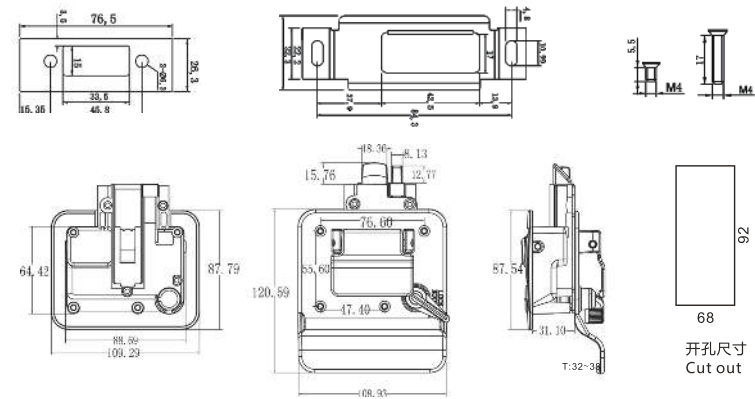
## TN6206



TN6206-BK

TN6206-CH

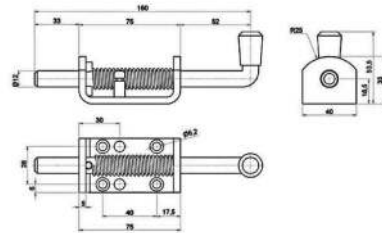
TN6206-W



Item	Material	Cut Out	Color	Board Thickness	Qty/ Carton
TN6206_BK	Zinc Allov&ABS	68x92mm	Black	32~38mm	12
TN6206_CH	Zinc Allov&ABS	68x92mm	Chrome	32~38mm	12
TN6206_W	Zinc Allov&ABS	68x92mm	White	32~38mm	12

# CARGO HARDWARE

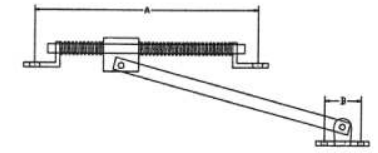
## TN-017



(mm)

Item No.	Description	Material	Finish
TN -017	Spring Loaded Latch	Steel	Zinc Plated
TN -017SS	Spring Loaded Latch	Stainless Steel	Electropolishing

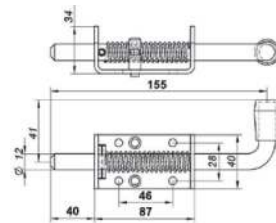
## TN-032



(Inch)

Item No.	Description	Material	Finish	A	B
TN -032-1	Utility Trailer Door Check	Stainless Steel	Nature	9.25"	1.5"
TN -032-2	Utility Trailer Door Check	Stainless Steel	Nature	13"	1.5"
TN -032-1ZP	Utility Trailer Door Check	Steel	Zinc Plated	9.25"	1.5"
TN -032-2ZP	Utility Trailer Door Check	Steel	Zinc Plated	13"	1.5"

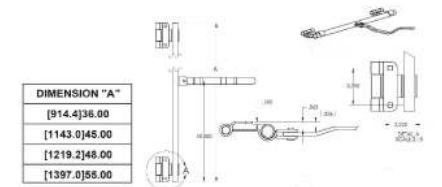
## TN-018



(mm)

Item No.	Description	Material	Finish
TN -018	Spring Bolt Latch	Stainless Steel	Electropolishing
TN -018ZP	Spring Bolt Latch	Steel	Zinc Plated
TN -018BLK	Spring Bolt Latch	Steel	Black Powder Coating

## TN-033



(Inch)

Item No.	Description	Material	Finish
TN -033-36	36" Cam Side Door Bar Lock	Steel	Zinc Plated
TN -033-45	45" Cam Side Door Bar Lock	Steel	Zinc Plated
TN -033-48	48" Cam Side Door Bar Lock	Steel	Zinc Plated
TN -033-55	55" Cam Side Door Bar Lock	Steel	Zinc Plated

# HANGER KITS

TN-7000



Item Name		
TN 7000	Slipper Hanger Kits For Tandem 7,000LBS Trailer Axles	
Details		
Item No.	Item Name	Qty/Set
TN -1305	11" Equalizers	2
TN -15843F	Front Hangers	2
TN -291C	Center Hangers	2
TN -15853R	Rear Hangers	2
TN -434	7/8"-9x4 3/4" Bolts with grease zerk	2
TN 78TL	7/8"-9 Locking Nuts	2
TN916-312	9/16-18x3.5" Shackle Bolts	8
TN 916L	9/16-18 Locking Nuts	8

# HANGER KITS

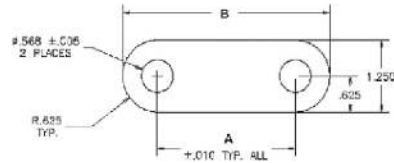
TN-2-7000



Item Name		
TN -7000	Tandem Axle Spring Hanger Kit For 2,000 to 7,000LBS Trailer Axles	
Details		
Item No.	Item Name	Qty/Set
TN -E1	7 3/4" EQ-E1 Equalizers	2
TN-350L	3 1/2" Shackle Straps	8
TN 281S	2.8" Hanger	6
TN916-3	9/16-18x3" Shackle Bolts	14
TN916L	9/16-18 Locking Nuts	14

# HANGER KITS

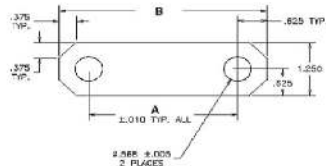
## Shackle Links



※ Shackle Links  
※ Material is 4 Gauge Q235, nature surface finish.

Part No.	"Hole to Hole Centerline Dimension"	Overall Length Dimension
	A(Inch)	B(Inch)
TN -200L	2.000	3.250
TN -225L	2.250	3.500
TN -250L	2.500	3.750
TN -256L	2.560	3.810
TN -262L	2.625	3.875
TN 312L	3.125	4.375
TN -350L	3.500	4.700
TN -512L	5.125	6.375

# Shackle Links

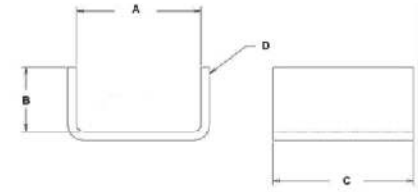


※ Shackle Links  
※ Material is 4 Gauge Q235, nature surface finish.

Part No.	"Hole to Hole Centerline Dimension"	Overall Length Dimension
	A(Inch)	B(Inch)
TN -200NL	2.000	3.250
TN -225NL	2.250	3.500
TN -250NL	2.500	3.750
TN -256NL	2.560	3.810
TN -262NL	2.625	3.875
TN312NL	3.125	4.375
TN -350NL	3.500	4.700
TN -512NL	5.125	6.375

# HANGER KITS

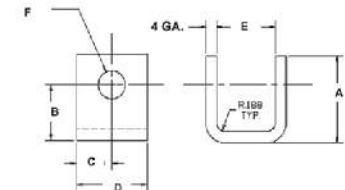
## Shackle Pockets



※ Material is Q235, nature surface finish.

Part No.	Inside dimension		Depth	Thickn
	Width	Height		
	A(Inch)	B(Inch)	C(Inch)	D(Inch)
TN-1	3.040	1.550	2.500	0.120
TN-2	3.040	1.560	3.000	0.250
TN-3	3.040	1.560	4.000	0.250
TN-4	3.540	1.560	3.000	0.224
TN-5	3.540	1.800	4.000	0.250
TN-6	3.560	1.560	3.000	0.224
TN-7	3.560	1.680	1.500	0.180
TN-8	3.560	1.680	2.000	0.180
TN-9	3.560	1.680	3.000	0.180
TN-10	3.880	1.630	3.000	0.120

# 1.25" Hangers

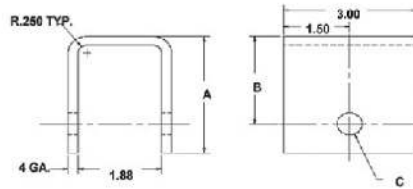


※ Material is 4 Gauge Q235, nature surface finish. 2 Holes 3/16" on the top is available.

Part No.	Hole location		Part Width	Inside leg		
	A(Inch)	B(Inch)				
	A(Inch)	B(Inch)	C(Inch)	D(Inch)	E(Inch)	F(Inch)
TN-100H	2.000	1.000	0.875	1.750	1.250	0.580
TN-100HB	2.250	1.000	0.625	1.500	1.250	0.568
TN-112H	1.750	1.125	0.750	1.500	1.250	0.568
TN-113H	2.300	1.138	0.750	1.500	1.250	0.568
TN-113HB	2.300	1.138	1.500	3.000	1.250	0.568

# HANGER KITS

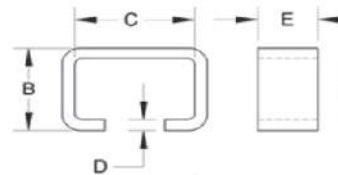
## 1.88" Hangers



\* Material is 4 Gauge Q235, nature surface finish. 2 Holes 9/16" on the top is available.

Part No.	Dimensions		
	Overall Height	Top to hole center	Hole
	A(Inch)	B(Inch)	C(Inch)
TN-200H	2.000	1.250	0.568
TN-206H	2.040	1.440	0.568
TN-300H	3.000	2.250	0.568
TN-303H	3.085	2.500	0.568
TN-305H	3.375	2.625	0.656
TN-308H	2.625	2.000	0.568
TN-400H	4.000	3.250	0.568
TN-405H	3.875	3.250	0.568
TN-500H	4.875	4.250	0.580
TN-504H	4.875	4.250	0.568
TN-600H	5.625	5.000	0.580
TN-610H	5.625	5.000	0.568
TN-175SLH	1.750	0.875	0.568*2.25 Slotted
TN-200SLG	2.000	1.000	0.580*2.25 Slotted

# C Type Hangers



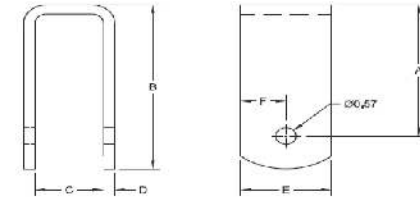
\* Material is Q235, nature surface finish.

(Inch)

Part No.	Dimension			
	A	B	C	D
TN-C	1.210	2.000	0.210	1.000

# HANGER KITS

## Spring Hangers



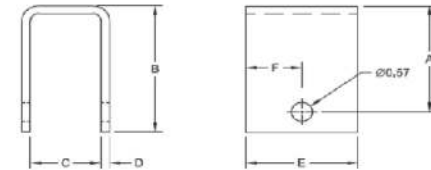
\* Spring Hangers-1 3/4" wide springs

\* Material is Q235, nature surface finish. 2 Holes 9/16" on the top is available.

(Inch)

Part No.	Dimensions					
	A	B	C	D	E	F
TN-194	2.000	2.810	1.880	0.220	2.500	1.250
TN-350	3.500	4.380	1.880	0.220	2.500	1.250
TN-475	4.750	5.630	1.880	0.300	2.500	1.250

# Spring Hangers



\* Spring Hangers-1 3/4" wide springs

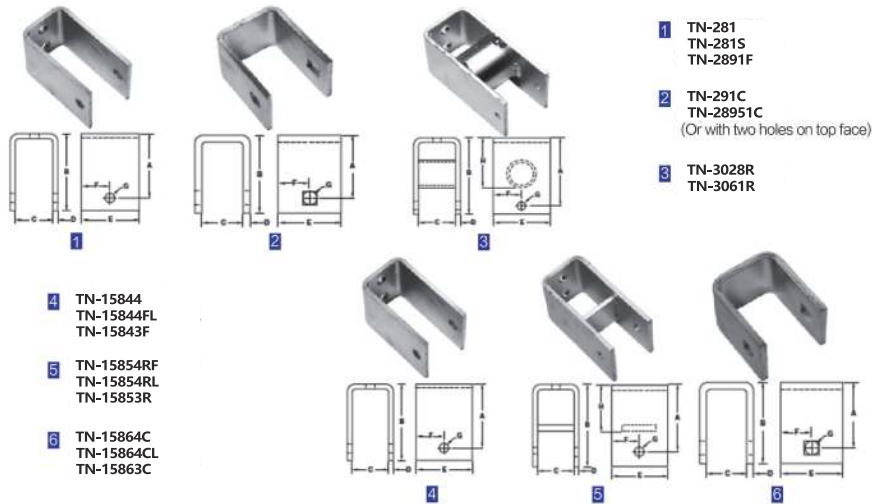
\* Material is Q235, nature surface finish. 2 Holes 9/16" on the top is available.

(Inch)

Part No.	Dimensions					
	A	B	C	D	E	F
TN-100	1.130	2.130	1.440	0.230	1.500	0.750
TN-140-130	1.400	2.000	1.250	0.230	1.500	0.750
TN-112	1.120	2.130	1.250	0.230	3.000	1.500
TN-144	1.440	2.060	1.880	0.230	3.000	1.500
TN-200	2.000	2.630	1.880	0.230	3.000	1.500
TN-246	2.460	3.090	1.880	0.230	3.000	1.500
TN-325	3.250	3.870	1.880	0.230	3.000	1.500
TN-425	4.250	4.870	1.880	0.230	3.000	1.500
TN-538	5.380	6.190	1.880	0.380	3.000	1.500

# HANGER KITS

## Spring Hangers For 2" Springs

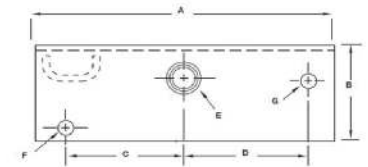


※ Material is Q235, nature surface finish. 2 Holes 9/16" on the top is available.

Part No.	Dimensions							
	A	B	C	D	E	F	G	H
TN-281F	4.250	4.880	2.250	0.250	3.000	1.500	0.570	N/A
TN-281S	2.800	3.560	2.250	0.310	3.000	1.500	0.570	N/A
TN-2891F	5.000	5.630	2.250	0.250	3.000	1.500	0.570	2.880
TN-291C	3.450	4.485	3.010	0.375	3.000	1.500	.90/.90	N/A
TN-2951C	4.500	5.530	3.010	0.375	3.000	1.500	.90/.90	N/A
TN-3028R	5.370	6.000	2.250	0.250	3.000	1.500	0.380	3.750
TN-3061R	6.430	7.060	2.250	0.250	3.000	1.500	0.380	4.820
TN-15844F	3.560	4.310	2.190	0.300	4.000	2.000	0.570	N/A
TN-15844FL	4.560	5.310	2.190	0.300	4.000	2.000	0.570	N/A
TN-15843F	3.560	4.310	2.190	0.300	3.000	1.500	0.570	N/A
TN-15864C	3.380	4.500	3.130	0.300	4.000	2.000	.84/.90	N/A
TN-15864CL	4.380	5.500	3.130	0.300	4.000	2.000	.84/.90	N/A
TN-15863C	3.380	4.500	3.130	0.370	3.000	1.500	.84/.90	N/A
TN-15854R	5.060	6.000	2.250	0.310	4.000	2.000	0.570	3.470
TN-15854RL	6.000	7.000	2.250	0.310	4.000	2.000	0.570	4.370
TN-15853R	5.060	6.000	2.250	0.310	3.000	1.500	0.570	3.470

# HANGER KITS

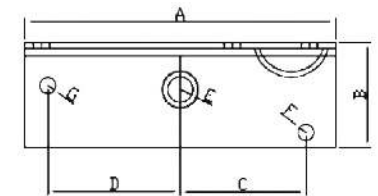
## Steel Fabricated Equalizers-2" springs



※ Material is 4 Gauge Q235, nature surface finish.

Item No.	Dimensions							
	A	B	C	D	E	F	G	H
TN-1304	11.000	3.500	5.190	4.630	0.880	0.440	0.560	0.220
TN-5541	12.000	3.850	4.440	4.750	0.880	0.560	0.560	0.310
TN-4541	12.000	3.850	4.440	4.750	0.880	0.560	0.560	0.240
TN-4541B	12.000	3.850	4.440	4.750	0.880	0.560	0.560	0.240
TN-1344	13.000	3.500	5.940	5.500	0.880	0.440	0.560	0.220

## Steel Fabricated Equalizers-2" springs



※ Material is 4 GA Q235, nature surface finish.

Item No.	Dimensions							
	A	B	C	D	E	F	G	H
TN-1305	11.000	3.660	4.460	4.700	0.880	0.570	0.570	0.225

※ Material: Q235 T equals thickness of material.

※ Surface finish is oiled. Inner width is 2.08"

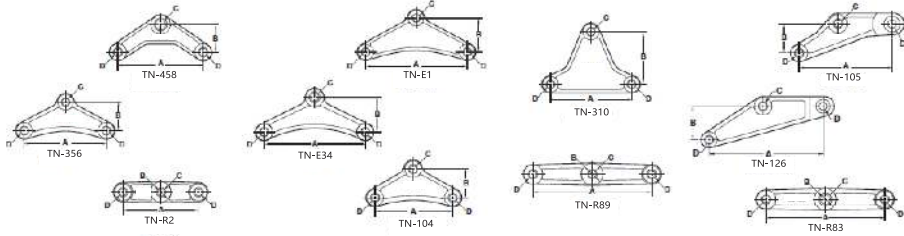
※ Center bushing for TN-5541, TN-4541, TN-4541B utilize 0.88 iD nylon bushing encased in a 1.31"0Dx1.06iN.

※ steel tube. TN-4541B surface finish black painting.

※ TN-1304, TN-1305 and TN-1344 not supplied with nylon bushing.

# HANGER KITS

## Casting Equalizers

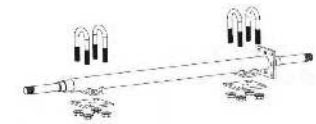
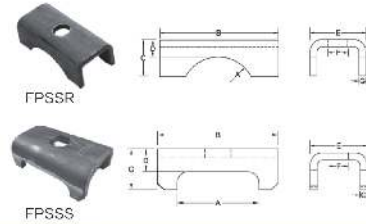


※ All casting equalizers are made from ductile iron, made to industry standards and come finished in black paint. (Inch)

Item No.	Dimensions			
	A	B	C	D
TN-R2	5.500	1.500	0.563	0.563
TN-310	6.060	4.000	0.563	0.563
TN-104	5.750	2.000	0.563	0.563
TN-356	6.130	2.500	0.563	0.563
TN-458	6.250	2.000	0.750	0.563
TN-105	6.750	2.000	0.563	0.563
TN-126	9.060	3.000	0.563	0.563
TN-E1	7.750	2.880	0.563	0.563
TN-E34	7.750	2.880	0.750	0.563
TN-R83	8.000	1.750	0.750	0.563
TN-R89	8.000	1.750	0.563	0.563

# HANGER KITS

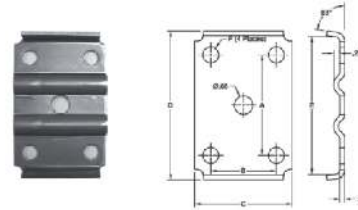
## Spring Seats



(Inch)

Item No.	Dimensions							
	Tube DIA.	A	B	C	D	E	F	G
TN175	1.75	0.88	2.25	0.94	0.53	1.85	0.67	0.22
TN238	2.38	1.19	4.00	1.20	0.56	1.85	0.67	0.22
TN300	3.00	1.51	4.00	1.20	0.56	1.85	0.67	0.22
TN350	3.50	1.76	4.00	1.20	0.56	1.85	0.67	0.22
TN500	5.00	2.54	6.00	1.60	0.78	2.50	0.88	0.38
TN200	2.00	2.03	3.00	0.94	0.53	1.85	0.67	0.22

# U Bolt Tie Plates



※ Material is 0.172" Q235, Surface finish is clear.

(Inch)

Item No.	Tube DIA.	Sping Width	Dimensions					
			A	B	C	D	E	F
TN-238175-50R	2.38	1.75	2.88	2.25	3.50	4.75	N/A	0.50
TN-238175-R	2.38	7.75	2.94	2.31	3.75	4.75	N/A	0.56
TN-238200R	2.38	2.00	2.88	2.50	3.75	4.75	N/A	0.50
TN-300175R	3.00	1.75	3.62	2.35	3.50	5.37	N/A	0.56
TN-300200-56R	3.00	2.00	3.62	2.60	3.75	5.37	N/A	0.56

# HANGER KITS U Bolts



FPUBR

FPUBS

(Inch)

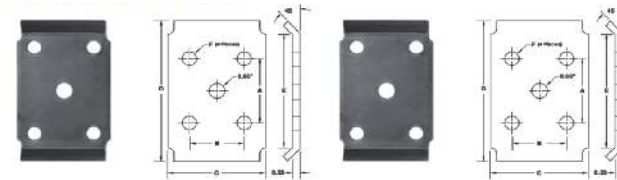
Item No.	Tube DIA.	Sping Width	Thread Size	Dimensions		
				A	B	C
TN-175400-38C	1.75	1.75	3/8"-16	1.81	4.00	2.00
TN-175429-38C	1.75	1.75	3/8"-16	1.81	4.29	2.00
TN-175429-38F	1.75	1.75	3/8"-24	1.81	4.29	2.00
TN-175429-50F	1.75	1.75	1/2"-20	1.81	4.29	2.00
TN-238513-44F	2.38	1.75/2.00	7/16"-20	2.44	5.13	2.00
TN-238550-50F	2.38	1.75/2.00	1/2"-20	2.44	5.50	2.00
TN-238625-50F	2.38	1.75/2.00	1/2"-20	2.44	6.25	3.00
TN-300650-50F	3.00	1.75/2.00	1/2"-20	3.09	6.50	2.00
TN-300700-50F	3.00	1.75/2.00	1/2"-20	3.09	7.00	2.00
TN-300700-56F	3.00	1.75/2.00	9/16"-18	3.09	7.00	3.00
TN-350800-56F	3.50	2.00	9/16"-18	3.56	8.00	2.00
TN-500900-63C	5.00	2.50/3.00	5/8"-11	5.06	9.00	2.00
TN-200575-56F	2.00	1.75	9/16"-18	2.06	5.75	2.50
TN-200650-56F	2.00	1.75	9/16"-18	2.09	6.50	2.50

※ Material is SAE 1018 hot rolled. Stainless steel available, ask for lead time and price.

※ Surface finish is clear. Ask for the zinc plating or HDP lead time and price.

※ Letter at the end of the part no. denotes Coarse-C and Fine-F thread.

# HANGER KITS U Bolt Tie Plates



FFTP

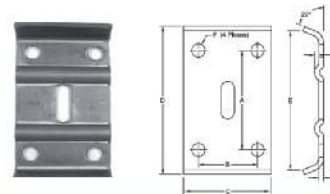
FFTPR

(Inch)

※ Material is 0.23" Q235, Surface finish is clear

Item No.	Tube DIA.	Sping Width	Dimensions					
			A	B	C	D	E	F
TN-175173	1.75	1.75	2.19	2.19	3.50	3.50	N/A	0.41
TN-175175	1.75	1.75	2.31	2.31	3.75	3.50	N/A	0.56
TN-200175	1.75	1.75	2.63	2.38	4.00	5.92	4.80	0.62
TN-200175-T2	1.75	1.75	2.63	2.38	3.50	3.50	N/A	0.56
TN-200175-56	1.75	1.75	2.63	2.38	3.50	5.92	4.80	0.56
TN-238175	1.75	1.75	2.94	2.31	3.75	5.38	4.80	0.56
TN-238200	2.00	2.00	2.94	2.56	4.00	5.92	4.80	0.56
TN-300175	1.75	1.75	3.62	2.38	3.75	5.92	4.80	0.56
TN-300200	2.00	2.00	3.56	2.59	4.00	5.38	4.80	0.56
TN-300209	2.00	2.00	3.56	2.59	4.00	5.92	4.80	0.62
TN-350200	2.00	2.00	4.13	2.63	4.00	7.00	5.69	0.69

# U Bolt Tie Plates



(Inch)

Item No.	Tube DIA.	Sping Width	Dimensions					
			A	B	C	D	E	F
TN-500250R	5.00	2.50	5.77	3.25	5.00	9.00	N/A	0.69
TN-500300R	5.00	3.00	5.75	3.88	6.00	9.00	N/A	0.69
TN-500300-81R	5.00	3.00	5.87	3.88	6.00	9.00	N/A	0.81
TN-513250R	5.13	2.50	5.94	3.38	5.00	9.00	N/A	0.81

## VALVES



Part No.	ETRTO	Rim Hole	A	C	E
TR413	V2.03.1	453"/11.3mm	42.5	15	32
TR600HP	—	453"/11.3mm	44	12	32









Part No.	Cap	Sleeve
TR413C	BLVC12	412CS



Part No.	ETRTO	A
TR501	V3.21.2	38

## BALANCE WEIGHT

Type	Product Picture
FE361	
ZN341	
FE387	
FE146	
FE281	
FE352	

## HAND WINCH



## TRAILER LIGHT

TRAILER LIGHT KIT	6" Oval Led Trailer Tail Lights 10 LED, Rubber Grommets, Wiring Pigtails and 3-way Plug	6" Oval Trailer Tail Lights Red 6 LED 3 Wires Connection System
		

# Professional Aluminum Composite Material Supplier

Designed Specially for Trailer Use

Choose TowNation, Choose Good Quality

After years of research and development, TowNation PANEL has mastered mature technology, which can significantly improve production capacity, installation efficiency and cost reduction, and most importantly, reduce the weight of the vehicle body.

The use of lightweight materials has greatly improved the interior space and carrying capacity of the truck compartment.



Choose  
TowNation PANEL  
Choose QUALITY

1. TowNation Panel Protective film
2. Top Aluminum Skin with PE/PVC Coating
3. Polymeric membrane
4. Standard LDPE Core / Optional FR Core
5. Polymeric membrane
6. Bottom Aluminum skin with primer coating



## FEATURES

**In the era of modern industrial development, traditional materials can no longer meet the demands of the transportation industry. The ACM developed by TowNation PANEL will be a revolutionary product in trailer industry.**

**Standard Size: 49"x96"**

**Standard Colors: Gloss White , Gloss Black, Charcoal Grey, Metallic Silver, Victory Red, Indigo Blue**



**Fast Assembly**



**High UV Resistance**



**Light Weight**



**High Impact Resistance**



**Dimensional Stability**



**Environmentally Friendly**

